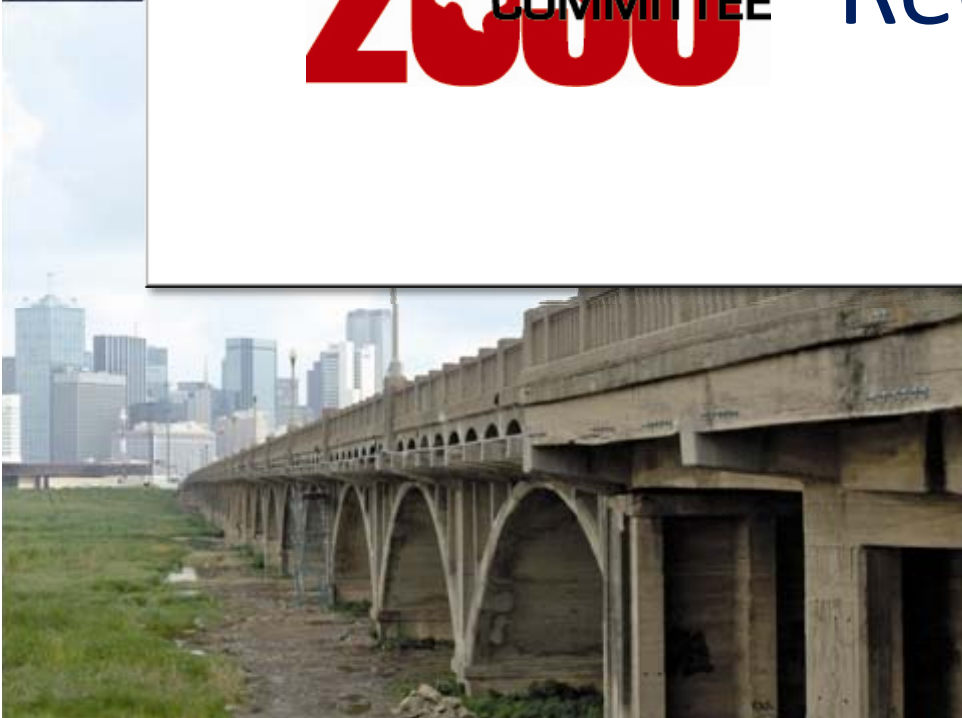




2030 COMMITTEE

Recommendations



Volunteer committee appointed by Chair Delisi – experienced, respected stakeholders guiding independent research

C. Michael Walton, Chair

Austin

David Marcus, Vice-Chair

El Paso

Ken Allen

San Antonio

Ruben Bonilla, Jr.

Corpus Christi

Drew Crutcher

Odessa

The Honorable Ed Emmett

Houston

Tom Johnson

Austin

David Laney

Dallas

Cullen Looney

Edinburg

Drayton McLane, Jr.

Temple

Roger Nober

Fort Worth

Gary Thomas

Dallas

Process

- Committee's charge - provide an independent, authoritative assessment of the state's transportation infrastructure and mobility needs from 2009 to 2030
- Research team from the TTI, CTR, UTSA
- 6 Committee meetings
- 6 Public hearings - Amarillo, Austin, Corpus Christi, Dallas, El Paso, Houston
- Formal public input period January 09

Public Input

- 91 comments from oral and written testimony during public hearings
- Website visits
 - September 1st through February 23rd - 2,556 Unique Visitors
 - January 9th through February 23rd - 519 Unique Visitors
- 180 suggestions and comments through its website, by regular mail and by facsimile

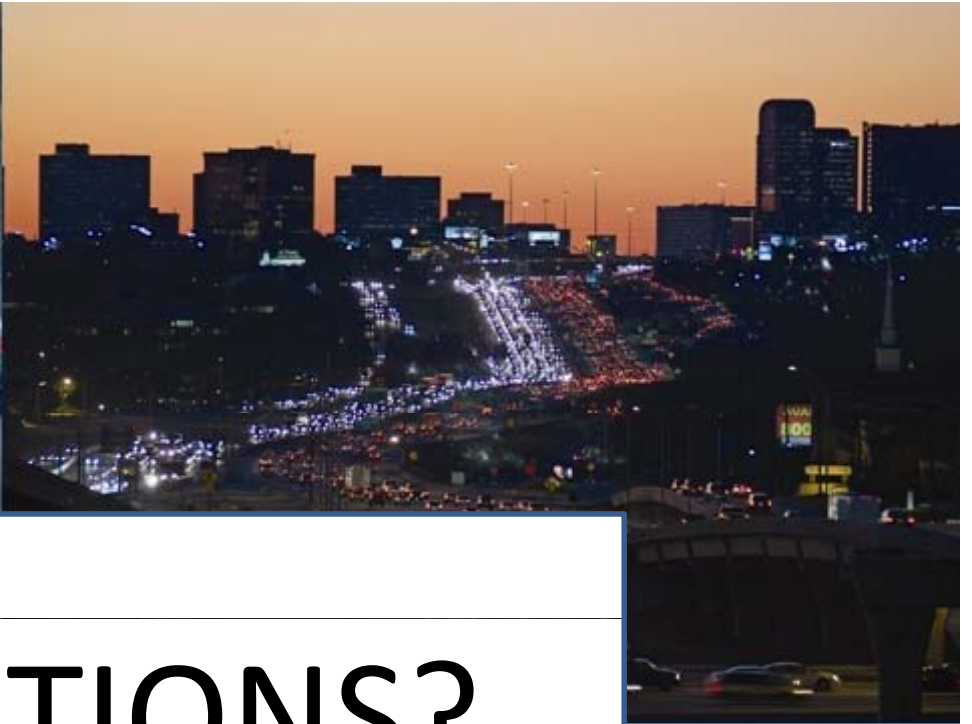
Committee Scope and Goals

- Scope
 - Comprehensive update on the maintenance (pavements and bridges) and mobility (urban and rural) needs of Texas
 - Overview other transportation needs, especially potential for Texas' relying increasingly on non-highway modes
- Goals
 - Preserve and enhance the value of transportation infrastructure
 - Preserve and enhance urban and rural mobility and their value to the economic competitiveness of Texas
 - Enhance the safety of Texas' traveling public
 - Initiate discussion on strategic role of all modes of transportation

Total and State Investment Needed (Billions 2008 \$)

	Needs 2009 - 2030		Annual Investment	
	Total	State Investment	Total	State Investment
Pavements	\$ 89	\$ 89	\$ 4.0	\$ 4.0
Bridges	\$ 36	\$ 36	\$ 1.6	\$ 1.6
Urban Mobility	\$ 171*	\$ 106	\$ 7.8*	\$ 4.8
Rural Mobility/Safety	\$ 19	\$ 19	\$ 0.9	\$ 0.9
TOTAL	\$ 315	\$250	\$14.3	\$11.3

** Historically about 2/3 of Urban Mobility has been State responsibility, 1/3 local*



QUESTIONS?

